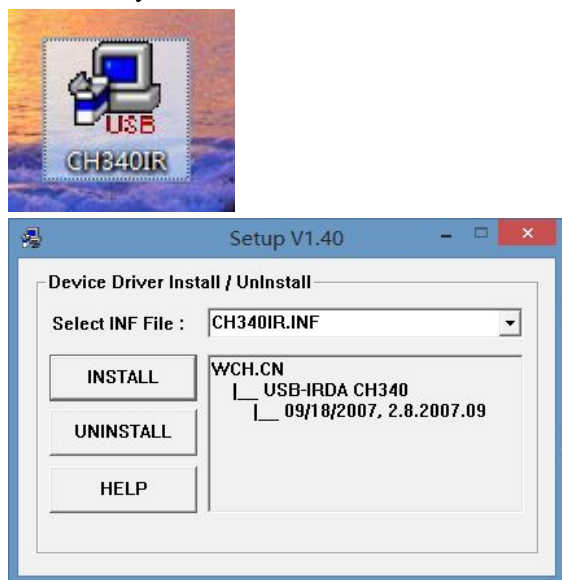


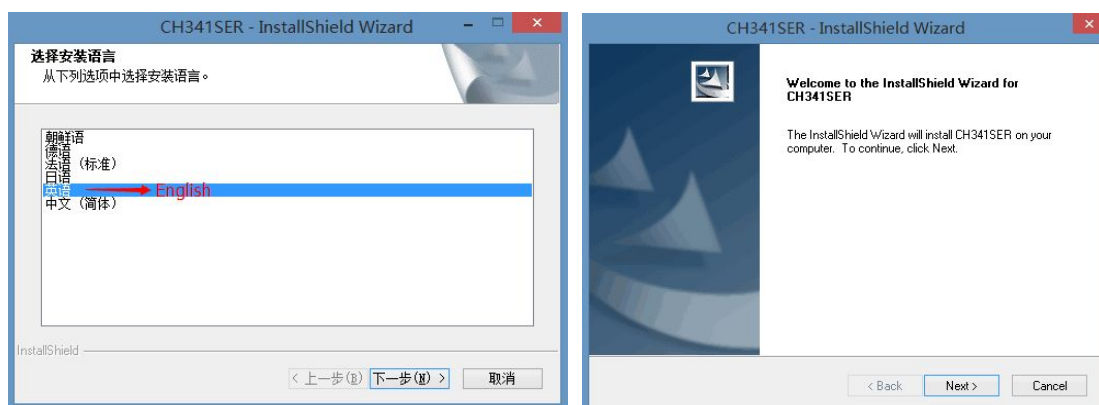
HW6180 One Click upgrade

1. First, Install the driver file, it depends on your PC system.

- If you are using **XP system**, please install the **CH340IR** driver as below, and choose install directly..



- If you are using windows **7 or 8 system**, please install the **CH341** driver as below, and choose the language for installing.



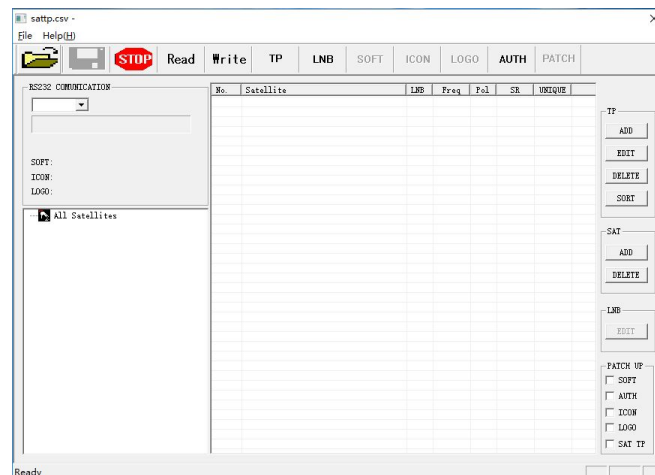
2. After installing the driver, you could connect the HW6180 meter to PC.

3. Hold the EXIT button and turn on meter, the meter will be entered into white screen mode.

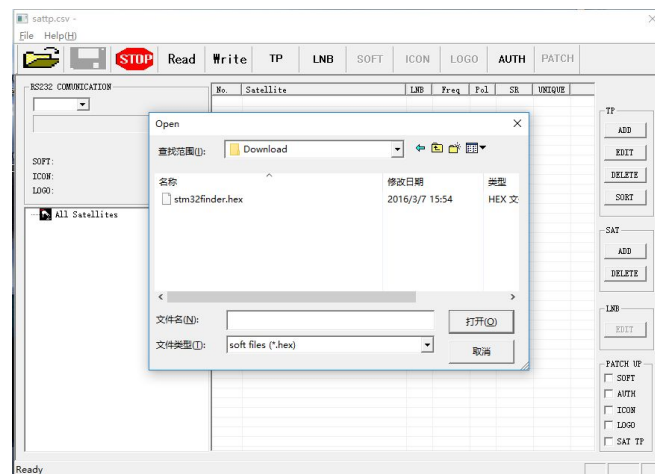
4. Unzip the Sateditor.rar , you will get the file as below,

| | | |
|---|--------------------|-----------------|
|  | sateditor_20160125 | 2016/3/7 17:40 |
|  | sateditor_20160125 | 2016/1/25 11:00 |

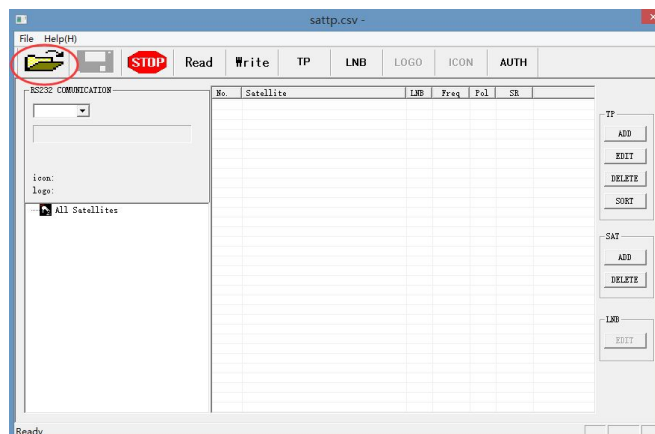
5. Run the Sateditor.exe file, it can be used directly without installation. The following picture will be displayed.



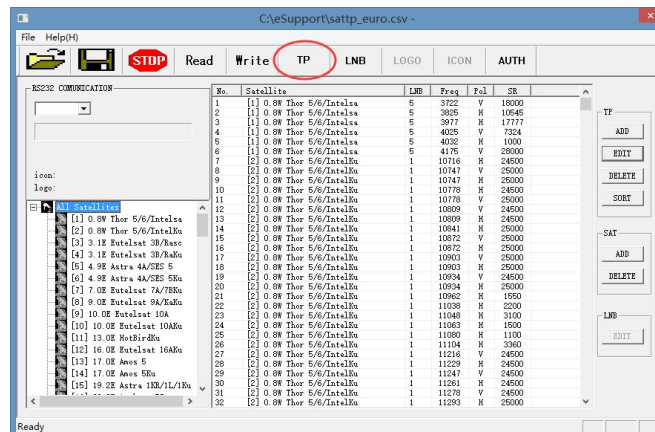
6. Click File and select “Load soft...” to load the software as following picture.



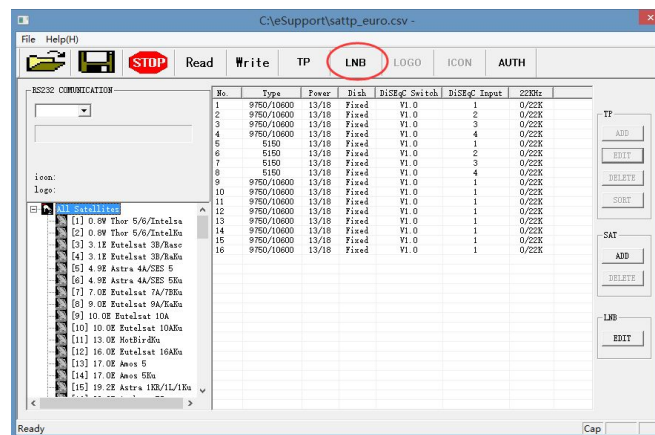
7. Click open and choose to load the TP file (CSV file) as following picture:



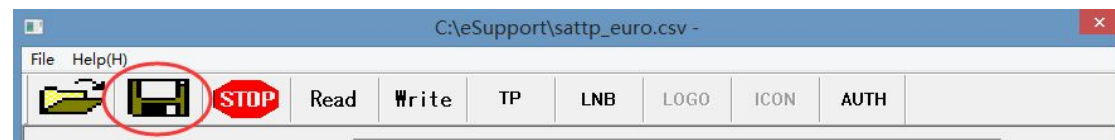
10. And if you want to display the TP information only, you could click the TP button to display as following picture.



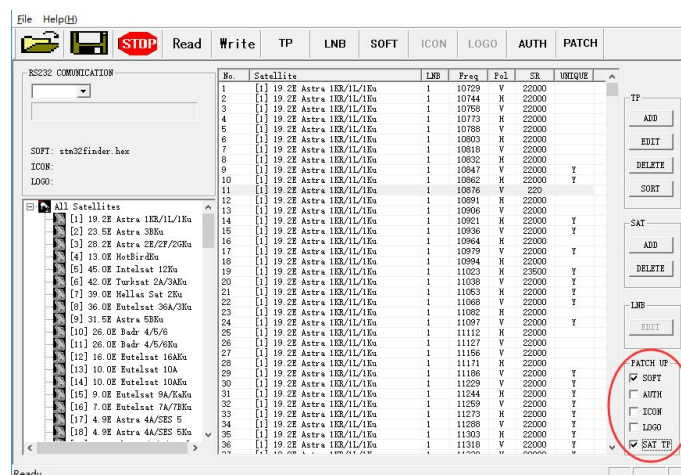
11. If you want to display the LNB information only, you could click the LNB button to display as following picture.



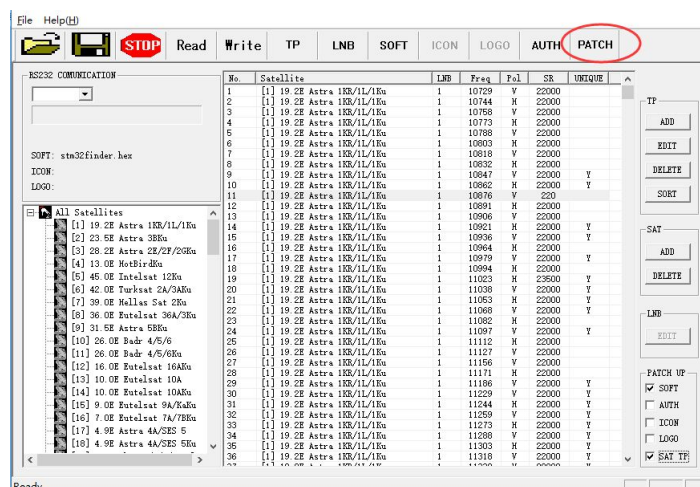
12. After editing the data, you could click save button to save the data.



13. Then select the SOFT and SAT TP as following picture.



14. Finally, click PATCH as following picture, the software and Sat TP will be upgraded together.



15. After click PATCH button, the meter will be started to upgrade, there is a percentage will be displayed on the meter as following picture, when it reach 100%, it will display OK.



Note: After connecting the meter to the PC, please hold exit button and turn on the meter, to enter the white screen mode first.

The meter will upgrade the software automatically first, after software upgrading, the meter will be re-started again, white screen disappeared, the main menu will be displayed. **DON'T DISCONNECT THE METER AND PC at this moment.** The meter will upgrade the Sat TP continuously.

Upgrade the TP information will takes some time.